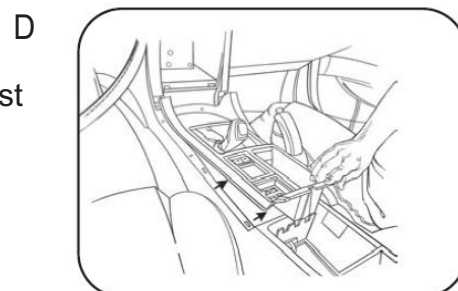
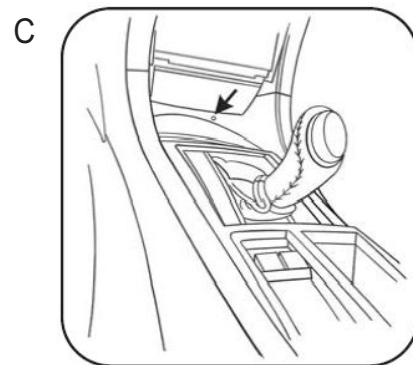
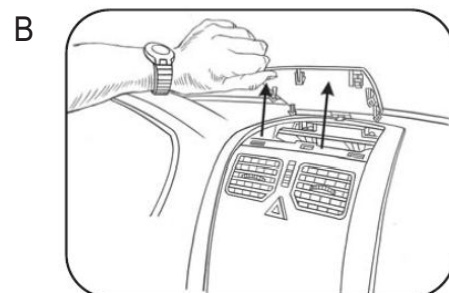
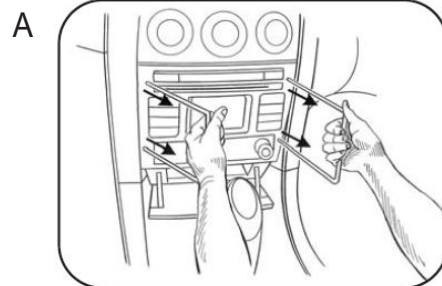


## VY to VZ Commodore Single Din Silver Radio Surround Install Instructions

VY to VZ September 2002 to August 2006

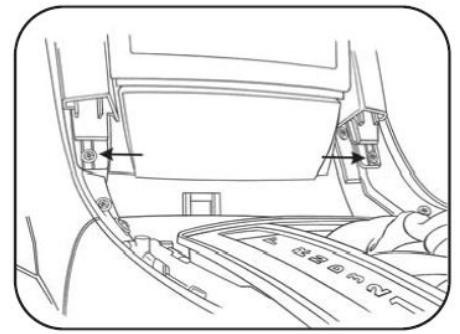
### Removal Instructions

1. Disconnect the Negative Terminal of the battery to prevent short circuit
2. Using radio removal keys, pull the factory head unit from the dash and disconnect wiring (fig A)  
If you do not have your removal keys please see link  
<http://www.caraudioonline.co.nz/apps/webstore/products/show/3192723>
3. Unclip & remove the top trim panel above the A/C vents and unscrew the 4 screws (fig B)
4. Unscrew screws from inside the storage area. (fig C)
5. Unclip and remove centre console, working from open armrest compartment forward (fig D)



6. Unscrew two screws at the bottom of the centre panel surrounding the radio and remove panel. (fig E)

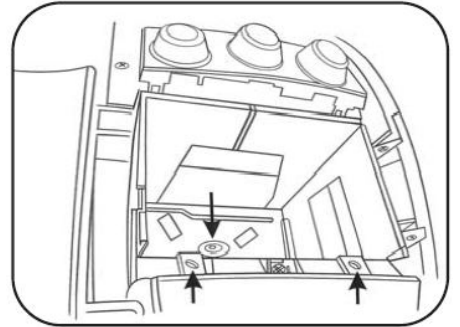
E



7. Unclip and remove trim panel surround radio and A/C Controls

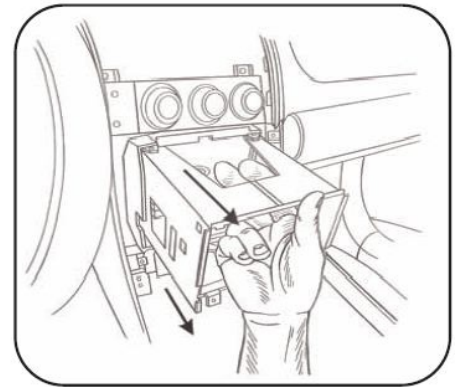
8. Remove the 3 screws holding in the cage. (fig F)

F



9. Remove radio cage by pulling down from the top. (fig G)

G



## Radio Mounting Single Din

1. Insert the side brackets into the openings in the dash surround.
2. Mount your new radio to the brackets using the screws supplied with your new radio
3. Align the head unit to the dash surround and tighten the screws.

Find the factory radio wiring loom in the dash. Connect to your new radio loom using one of the following methods. Connect any other external wiring as required and also antenna. (It is possible you will need an antenna adapter as shown below)

### **Adapter Loom (recommended)**

If using a vehicle specific adapter loom, connect adapter loom to vehicle radio loom and join the other end to new radio loom as indicated by labels. (Be sure to isolate and individually tape ends of unused wires to prevent shorts)

### **Hard Wiring**

If not using a vehicle specific adapter loom it is recommended you use an electrical meter to identify wiring. The Solder method of wiring is recommended as described below (Be sure to isolate and individually tape ends of unused wires to prevent shorts)



Strip and Twist



Solder



Tape

After you have completed the necessary wiring steps and tested the unit continue to final assembly.

## **Final Assembly**

Reassemble dash in the reverse order but replace the removed factory cage with your new Radio Surround Assembly.

### **Additional Install Items for this model of vehicle**



Vehicle Specific Adapter Loom



Aerial Adapter



Radio Removal Tools

## **Liability Disclaimer**

These instructions are based on carefully documented info and years of research. The author Car Audio New Zealand can not be held accountable for discrepancies due to vehicle options or manufactures variations. Car Audio New Zealand (2006) Ltd can not be held responsible for damage that may occur to the vehicle while using this instruction booklet.